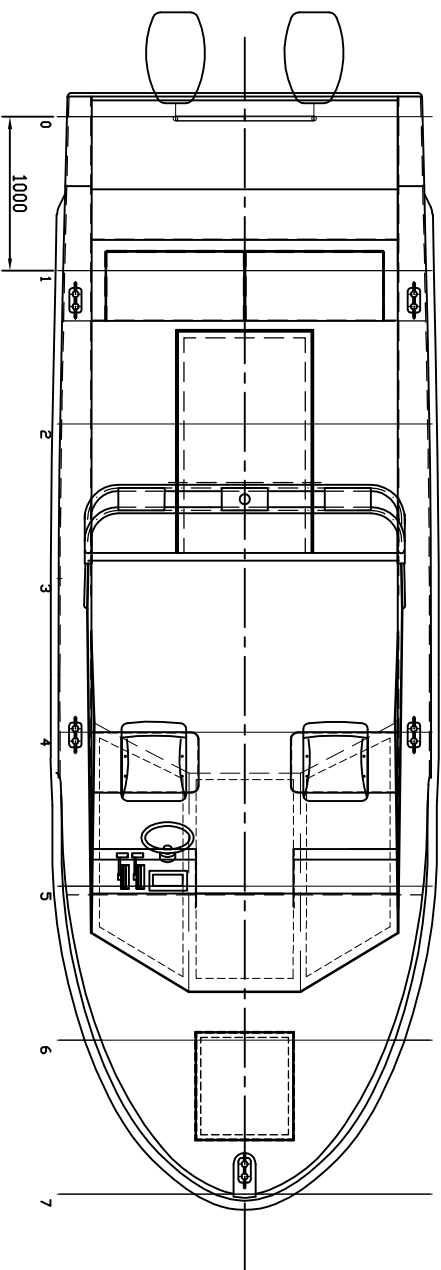


View of transom



7.2M WORKBOAT/FISHER v2

- Length overall : 7.2 m
- Beam max : 2.52 m
- Depth moulded : 1.20m
- Draught : 0.42m
- Displacement (full load) : 2.5t
- Engines : BENZIN
- Engine power : 2x 100-180HP

DESIGN	2015.01.06	Name	Pawel Hryniewicz	Podpis	MOTOR BOAT RAF 7.2M WBF2 DESIGN: Pawel Hryniewicz for Rafarn Lowicz
DRAWN	2015.01.06	Name	Pawel Hryniewicz	<i>Hryniewicz</i>	
CHECKED		FORMAT	A4		
SCALE	1: 50	NUMBER OF DESIGN	GENERAL ARRANGEMENT		Arkusz 1
					Liczba arkuszy 1